



Tandem Axle Slider Line Saver

Installation Instructions

Item # EZCUT40 | The **EZ Claw Tandem Axle Slider Line Saver** keeps air hoses and electrical lines supported toward the rear of the trailer with sliding axles.



Kit includes:

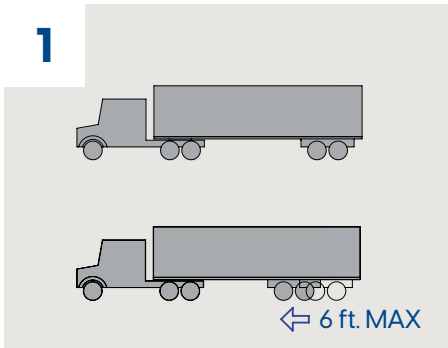
- (1) Tandem Axle Slider Line Saver
- (1) 4" x 8" Mounting Plate
- (2) 2" x 8" Mounting Plate
- (1) 3/8" Hose and Cable Block
- (1) 5/16" UT Hardware Kit

Recommended Tools for Installation:

- (1) Battery Powered Drill
- (1) 1/2" Socket
- (1) 1/2" Open Ended Wrench
- (1) 7/16" Socket
- (1) Permanent Marker or Center Punch

Installation instructions

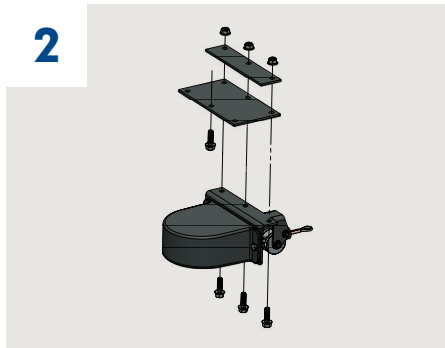
1



Position trailer axles.

Make sure tandem axles are slid all the way to the rear position. Then slide tandem forward 6' or to the most forward position if slide length is less than 6'. DO NOT EXCEED 6' if your tandem can slide forward more than 6'.

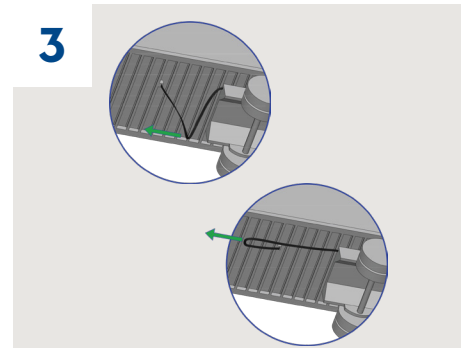
2



Pre-assemble Line Saver.

Loosely assemble EZ Claw Tandem Axle Slider Line Saver as shown above.

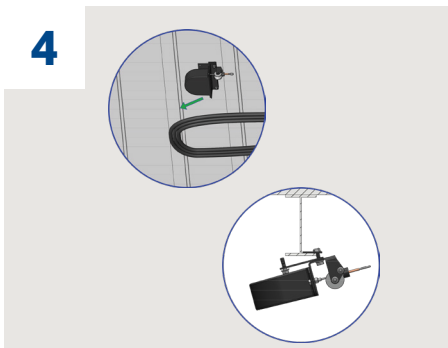
3



Remove slack.

Pull the air hoses and electrical line straight forward from the tandem, removing the slack in the lines.

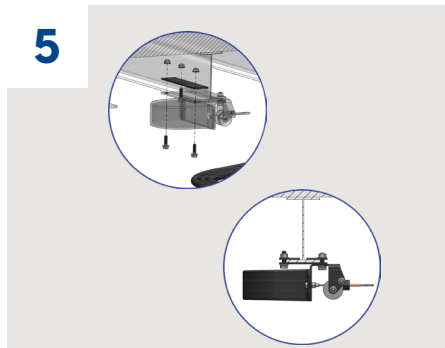
4



Determine location.

Locate the crossmember closest to the forward-most point of the lines. If this point falls between two crossmembers, choose the crossmember closer to the rear of the trailer. Hook the assembly from Step 2 onto this crossmember, near the forward-most part of the lines.

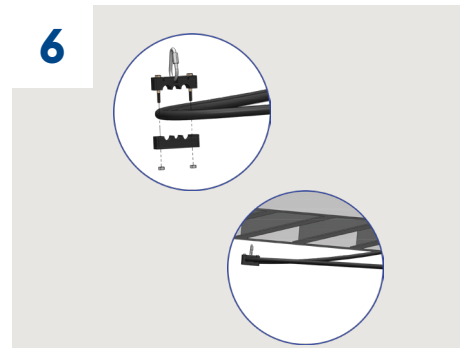
5



Tighten hardware.

Install the remaining bolts, nuts and plate onto the Line Saver, ensuring correct hose alignment. Tighten all nuts with a 1/2" wrench and socket.

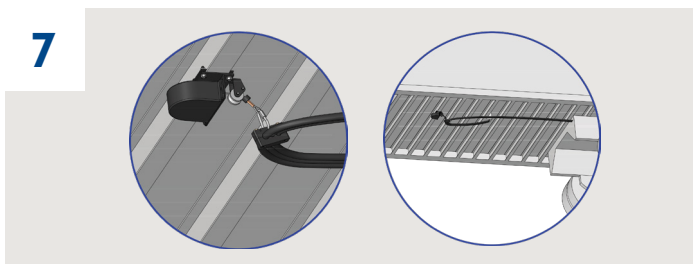
6



Attach Hose & Cable Block to lines.

Install the included Hose and Cable Block to the tandem brake and electric lines.

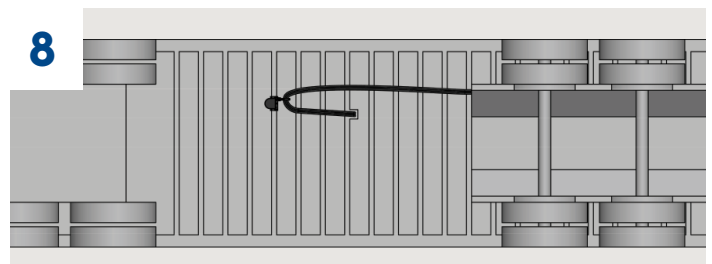
7



Connect Line Saver cable.

Hook the Delta Quicklink on the Hose & Cable Block onto the eyelet on the end of the Line Saver cable. The cable from the Line Saver should not need to be pulled out for this step. If it does, re-mount the Line Saver on the next crossmember, closer to the rear of the trailer.

8



Check for clearance.

Your lines and Line Saver should now be installed as shown above. To check the installation, slide the tandem to the rear. Make sure there is no hose interference during the slide. When the tandem axles are slid all the way to the rear of the trailer, pull on the Line Saver cable to make sure there's extra cable still in the Line Saver. If there's no more cable, re-mount the Line Saver on the next crossmember, closer to the rear of the trailer.